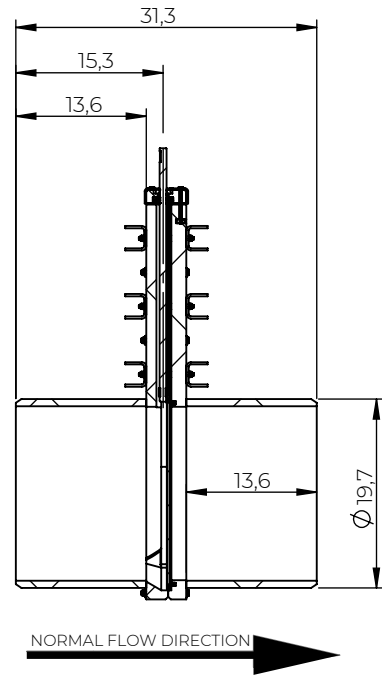
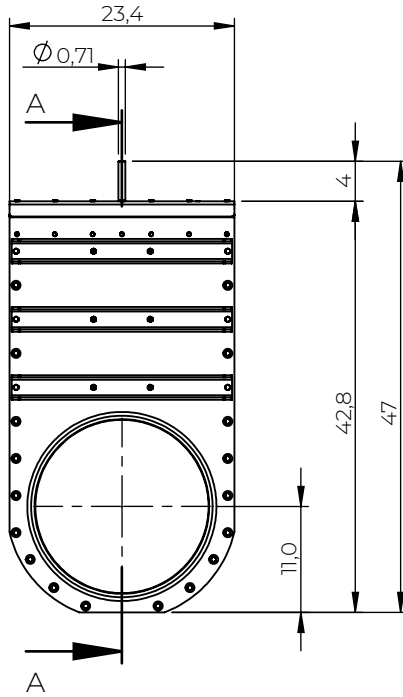
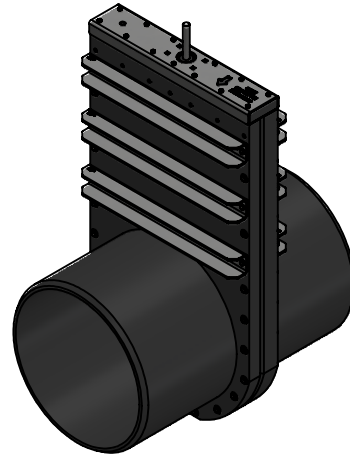
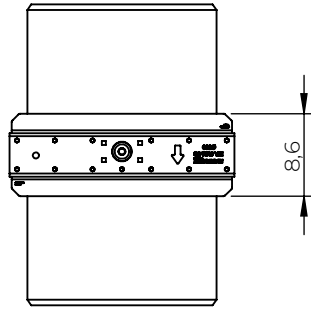


NOT FOR PRODUCTION



Approval Signature: _____

Date: _____

| ✓ | Article No. | Knife gate material | Spindle material | Reinforcement material |
|---|-------------|----------------------|----------------------|------------------------|
| | V70076500 | EN1.4404 / AISI 316 | EN1.4404 / AISI 316 | EN1.4404 / AISI 316 |
| | V70078500 | EN1.4462 / AISI 2205 | EN1.4462 / AISI 2205 | EN1.4404 / AISI 316 |
| | V70079500 | EN1.4462 / AISI 2205 | EN1.4462 / AISI 2205 | EN1.4462 / AISI 2205 |

| | | | | | | |
|--------------------------------------|-------------------|----------------------------|--|-----------------------------------|-----------------------|----------------|
| Designed By PW | Approved By RI | Created Date 2022-08-30 | Units [inch] | General Tolerance ISO 2768-1 m | Scale 1:20 | |
| Material See table | | | Comment PE100 SDR17 | | Updated 2022-08-31 | |
| Weight [Lbs] 218 | Box Volume [ft³] | | Description RIA Stop Valve SVM-TG NPS 20" | | | |
| WAPRO GROUP www.riawatech.com | | | Article Number See table | Drawing Number svm-tg-Ø500_us | Rev A | Sheet 1 (1) |

© 2022 Riawatech A/S. This document is subject to copyrights owned by Riawatech A/S. Any amendments, republication, retransmission, and/or reproduction of all or any part of the document is expressly prohibited, unless the copyright owner of the material has expressly granted its prior written consent. All other rights are reserved.