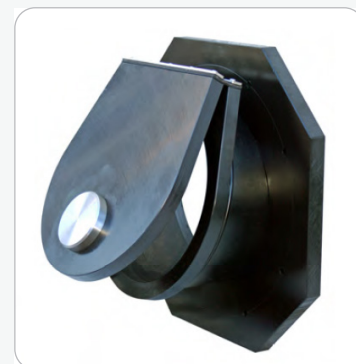


FLAP VALVE - KVF NPS/OD 8-24

AREA OF USE: With flange for wall mounting. Barrier against backflow in the piping system. Discharge from drainage systems to open channels and pump stations. KVF is for one-way flow.

ADVANTAGES WITH WAFLAP KVF:

- The flap valve can be mounted below the water surface
- The materials are corrosion-resistant with low maintenance requirements
- Easy opening in the direction of flow, and the flap closes securely in the opposite direction
- Without mechanics, thereby allowing for easy installation



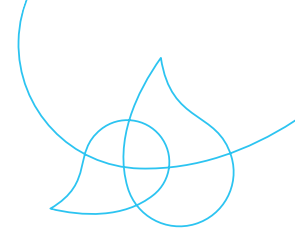
INSTALLATION: Mounted on a maintenance-free, heavy-duty rubber hinge with embedded canvas that is not affected by reduced friction from the surroundings. The slanted flap (inclination 15°) is mounted on a maintenance-free, heavy-duty rubber hinge with embedded fabric, which is not affected by reduced friction from the environment, thereby a lower hydraulic resistance in the direction of flow. Soft seal mounted against the flap.

MATERIAL:

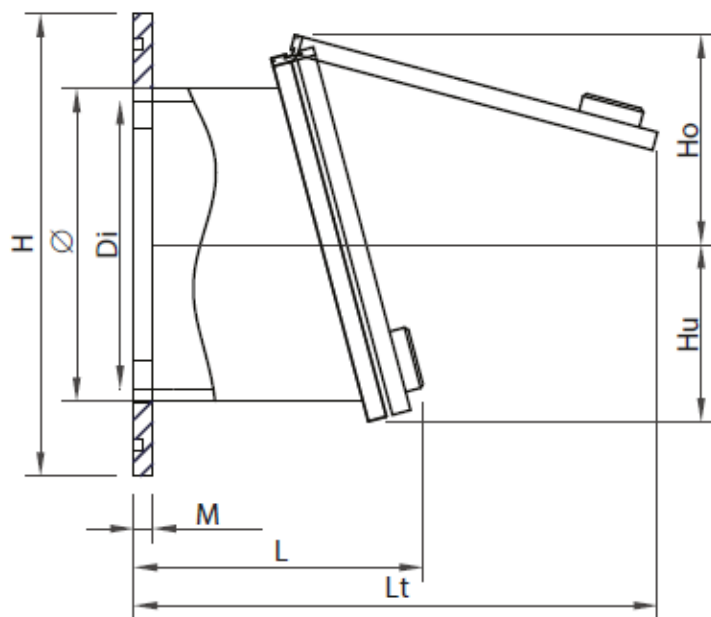
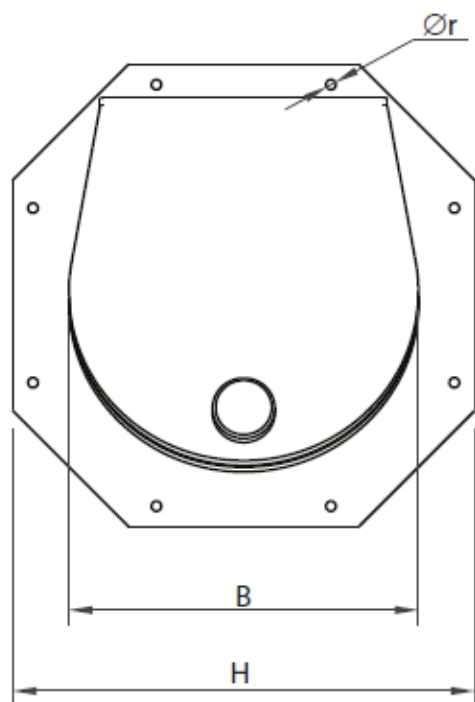
Pipe to flap valve	PEHD
Flap and wall flange	PEHD
Weight and reinforcement	EN 1.4404
Hinge rubber	EP 400/3-3+1,5 LD
Hinge bracket	EN 1.4404
Seal against the flap	EPDM
Seal against wall	EPDM sponge rubber

TECHNICAL DATA:

Pressure ratio	0,5 bar
Temperatur	-50°C - +80°C



FLAP VALVE - KVF NPS/OD 8-24



DIMENSIONS IN [INCHES]

NPS/OD	Ø	H	Di	B	M	L	Lt	Ør	WEIGHT [LBS]	PIPE TYPE
8	8	14,6	7,3	8,9	1,2	10,2	15,8	8xø11	8,8	SDR 26
10	10	17,3	9,1	10,8	1,2	11,8	18,9	8xø13	13,2	SDR 26
12	12	20,5	11,4	13,6	1,2	15,6	25	8xø13	24,3	SDR 26
16	16	25,2	14,5	17,7	1,2	16,5	28,7	8xø16	41,9	SDR 26
18	18	27,6	16,4	20,1	1,2	17,3	31,1	8xø16	63,9	SDR 26
20	20	29,1	18,2	22	1,2	18,3	33,1	8xø16	92,6	SDR 26
22	22	30,3	20,4	24	1,2	19,9	35	8xø16	99,2	SDR 26
24	24	35,8	22,9	28	1,2	21,1	37,6	8xø16	116,8	SDR 26

Other dimensions on request. Reserves the right to changes.