

FLAP VALVE - KVF NPS/OD 28-47

AREA OF USE: With flange for wall mounting. Barrier against backflow in the piping system. Discharge from drainage systems to open channels and pump stations. KVF is for one-way flow.

ADVANTAGES WITH WAFLAP KVF:

- The flap valve can be mounted below the water surface
- The materials are corrosion-resistant with low maintenance requirements
- Easy opening in the direction of flow, and the flap closes securely in the opposite direction
- Without mechanics, thereby allowing for easy installation



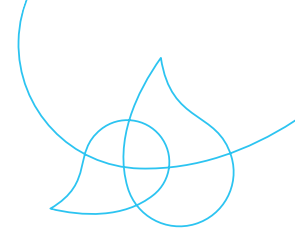
INSTALLATION: Mounted on a maintenance-free, heavy-duty rubber hinge with embedded canvas that is not affected by reduced friction from the surroundings. The slanted flap (inclination 15°) is mounted on a maintenance-free, heavy-duty rubber hinge with embedded fabric, which is not affected by reduced friction from the environment, thereby a lower hydraulic resistance in the direction of flow. Soft seal mounted against the flap.

MATERIAL:

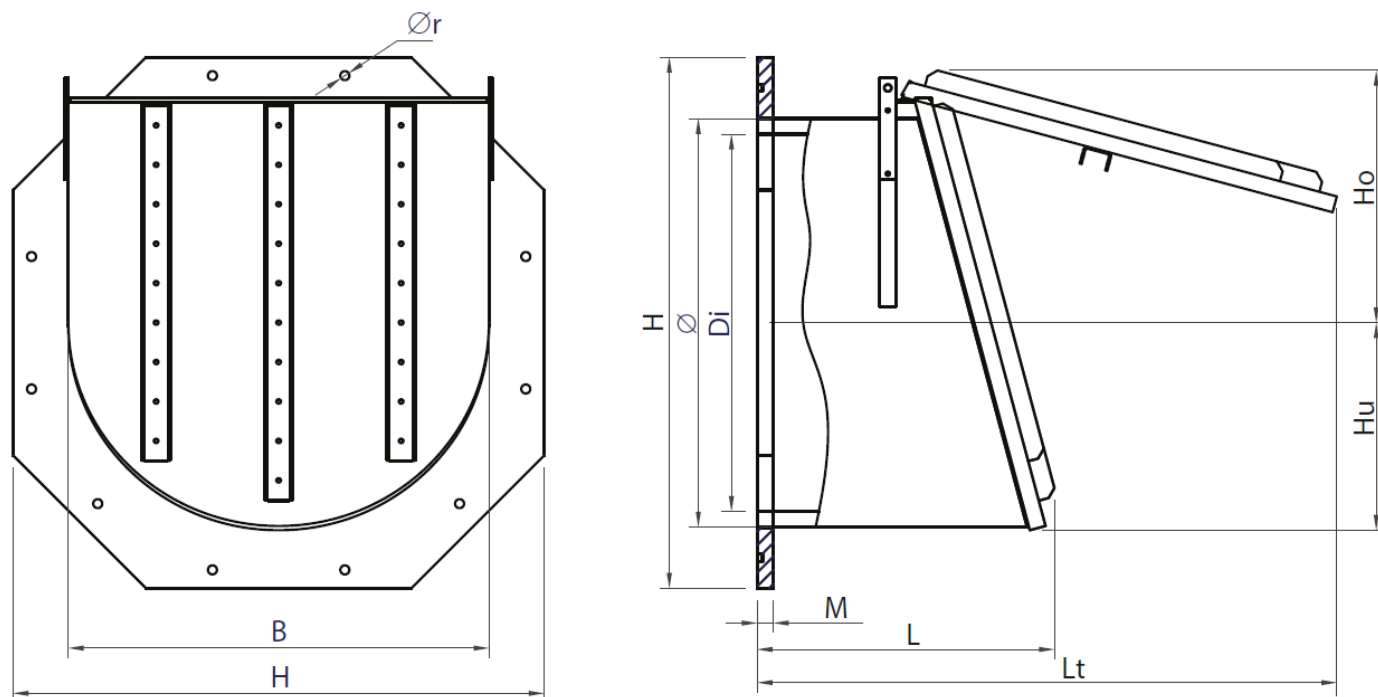
Pipe to flap valve	PEHD
Flap and wall flange	PEHD
Weight and reinforcement	EN 1.4404
Hinge rubber	EP 400/3-3+1,5 LD
Hinge bracket	EN 1.4404
Seal against the flap	EPDM
Seal against wall	EPDM sponge rubber

TECHNICAL DATA:

Pressure ratio	0,5 bar
Temperatur	-50°C - +80°C



FLAP VALVE - KVF NPS/OD 28-47



DIMENSIONS IN [INCHES]

NPS/OD	Ø	H	Di	B	M	L	Lt	Ør	WEIGHT[LBS]	PIPE TYPE
28	28	39,4	655,6	29,1	1,6	22,8	41,7	12xØ20	161	SDR 26
32	32	39,4	738,8	32,7	1,6	24,6	47	12xØ20	205	SDR 26
35	35	47,2	831,2	36,6	1,6	27,2	50,1	12xØ20	269	SDR 26
39	39	51,2	923,6	40,5	1,6	28,7	56,3	12xØ22	364	SDR 26
47	47	59,1	1108,2	49	1,6	32,9	69,3	12xØ22	474	SDR 26

Other dimensions on request. Reserves the right to changes.